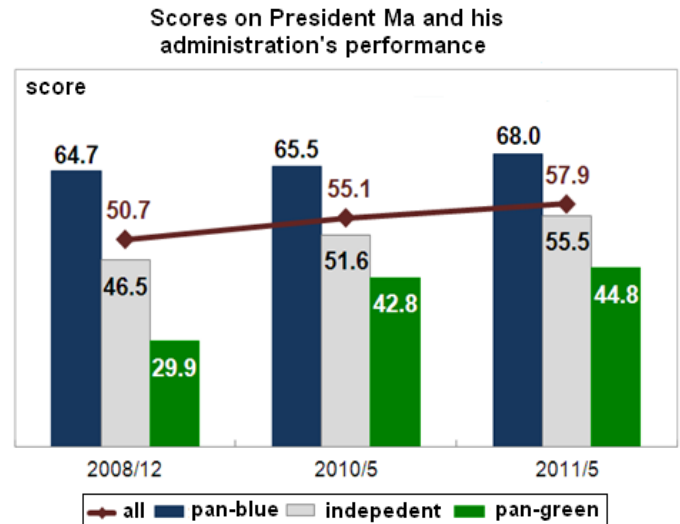


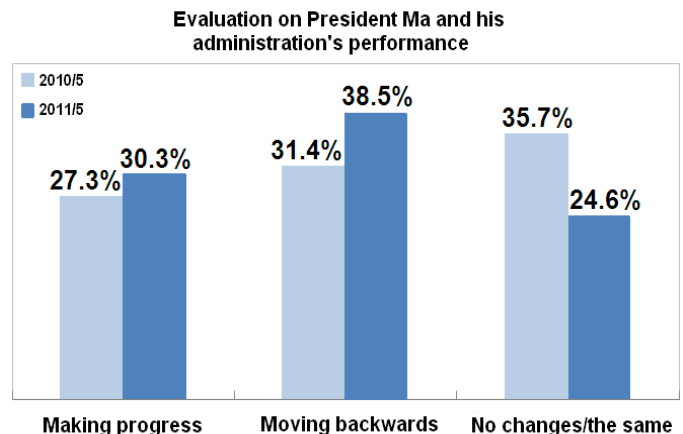
Survey on President Ma Ying-jeou's Performance on His Third Anniversary in Office and the Approval Rating of the Cabinet

A. The Ma administration received a score of 57.9 for its performance, with 30.3 percent saying it was making progress, while 38.5 percent holding opposite views compared with two and a half years ago.

The poll indicated that President Ma and his team received an average score of 57.9 on a 0-100 scale, in which 60 is the passing grade for their performance over the past three years, and 60.0 percent of the interviewed gave the president and his team a grade above 60. Compared with the poll conducted two and a half years ago, the administration is making some progress by gaining 7.2 points, but it has not reached the passing score. According to our cross-tabulation analysis, the supporters of the pan-blue camp had stable evaluation on the Ma administration's performance since they came to power with scores lingering between 65 and 68. Although positive evaluation on the Ma administration's achievements has increased from the respondents who had no party preference and the supporters of the pan-green camp in the past few years, the progress has been slowing down over the past year.



When asked about the administration's performance in comparison with three years ago, 30.3 percent of the respondents said it was making progress, while 38.5 percent said it was moving backwards, and 24.6 percent said it had little changes or no changes. Compared with the poll conducted on President Ma's second anniversary in power, people who thought the team was making progress increased by 2.9 percentage points, while people who held opposite views also had an increase of 7.2 percentage points, and those who said the situation was about the same decreased by 11.1 percentage points. Obviously, some people had changed their views on President Ma and his team over the past year.

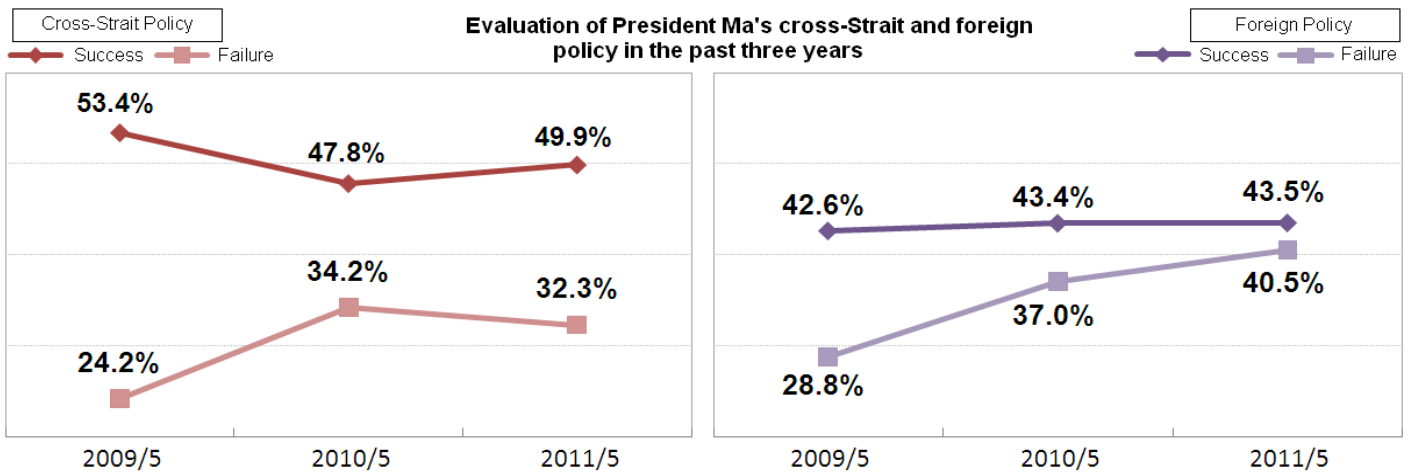


It is also noteworthy that different measuring methods lead to different results because each interviewee has a different standard gauge.

B. 49.9 percent said Ma's cross-Strait policy was successful, but 32.3 percent said otherwise. The Ma administration's foreign policy was considered a success by 43.5 percent, but 40.5 percent said it was a failure.

When it comes to President Ma's cross-Strait and foreign policy over the past three years, the cross-Strait policy was considered a success by 49.9 percent of the polled, while 32.3 percent said otherwise. 43.5 percent said Ma's foreign policy was successful but 40.5 percent did not think so. Generally speaking, nearly half of the interviewed thought President Ma did a good job in dealing with cross-Strait relations and gave more positive evaluation on his cross-Strait compared to his foreign policy. While 72.5

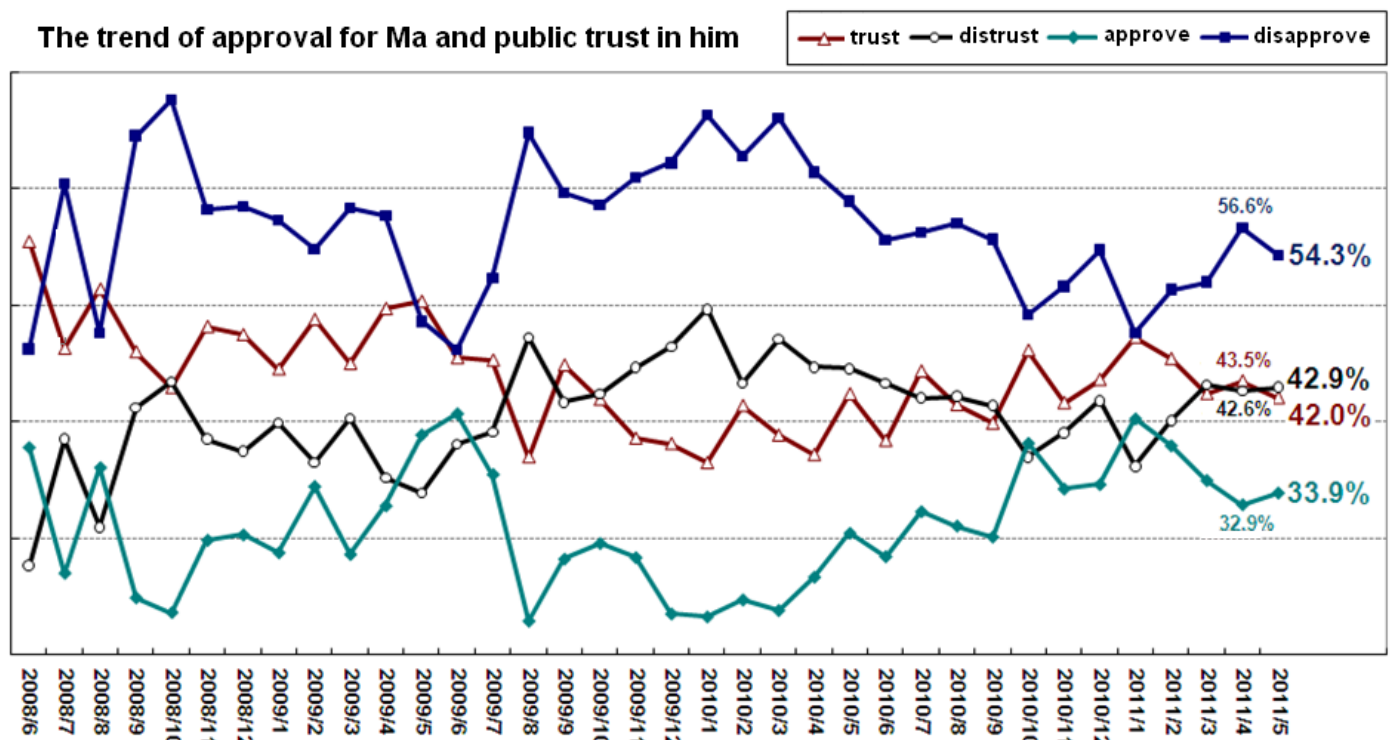
percent of the supporters of the pan-green camp said Ma's cross-Strait policy was a failure, 18.3 percent of them held totally opposite views on it. In addition, while the percentage of people holding positive views on Ma's foreign policy in the past three years remains almost the same, the percentage of people who think the foreign policy is a failure has gone up. People's evaluation on Ma's foreign policy was influenced by the political disputes over the official name Taiwan should use in the World Health Assembly (WHA) when the poll was held.



C. President Ma Ying-jeou's performance: 42.0 percent of the respondents trusted President Ma, while 42.9 percent held the opposite view. 33.9 percent were satisfied with his performance, but 54.3 percent were not.

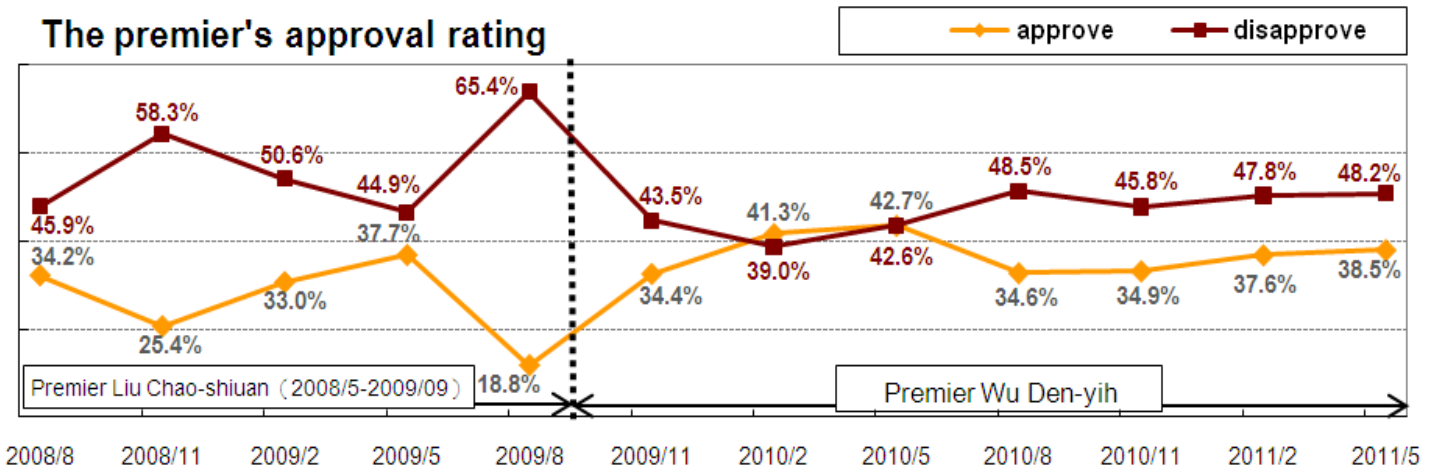
The poll showed President Ma's approval rating was 33.9 percent and disapproval rating 54.3 percent. Ma's approval rating climbed 1 percentage point, and his disapproval rating slipped 2.3 percentage points compared with the poll conducted last month. 42.0 percent of the polled had trust in President Ma, but 42.9 percent said otherwise. Compared with the previous month, the level of public trust in Ma edged down by 1.4 percentage points and the level of public distrust in Ma climbed 0.3 percentage points. In general, people are still quite divided over their trust for President Ma. In spite of the increase in President Ma's approval rating this month, the variations are within the margin of error.

Without the occurrence of major incidents, President Ma's approval rating, and the public trust in him have remained quite stable over the past three months according to the trend of the polls.



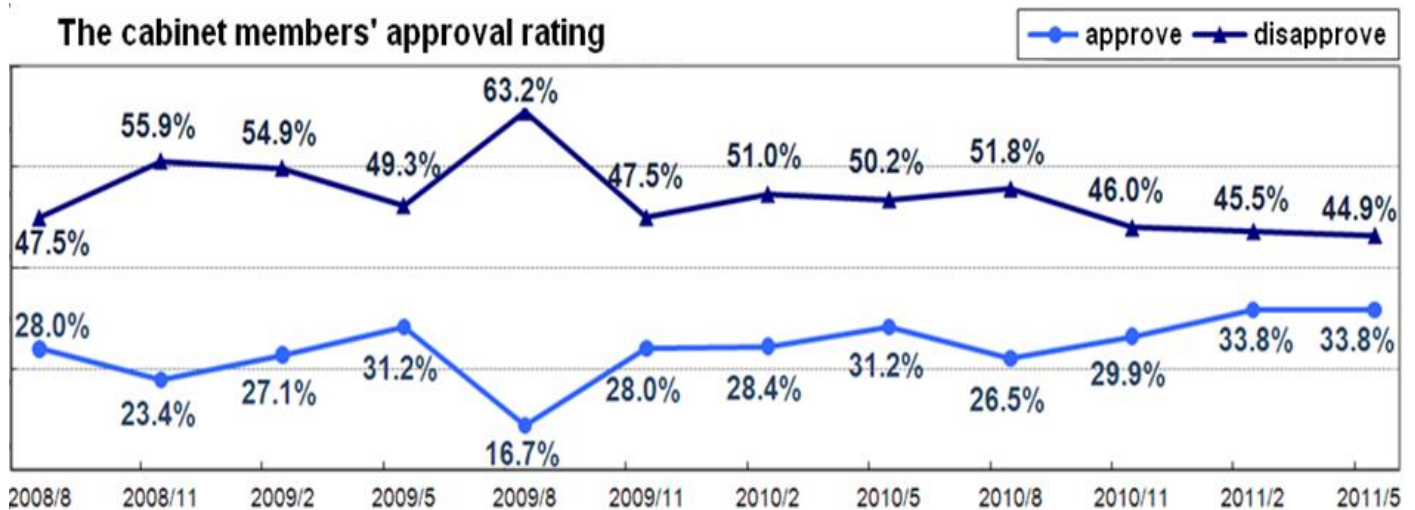
D. 38.5 percent of respondents were satisfied with Premier Wu Den-yih's performance, but 48.2 percent held the opposite view. 33.8 percent were content with the cabinet members' performance while 44.9 percent were not.

GVSRC has been conducting a quarterly survey on the performance of the premier and his cabinet members. The poll indicates that Premier Wu's approval rating stands at 38.5 percent, and disapproval rating at 48.2 percent. Wu's approval rating climbed 0.9 percentage points and disapproval rating also edged up by 0.4 percentage points compared with last quarter. The public's evaluation on Premier Wu's performance in the past year has remained quite stable.



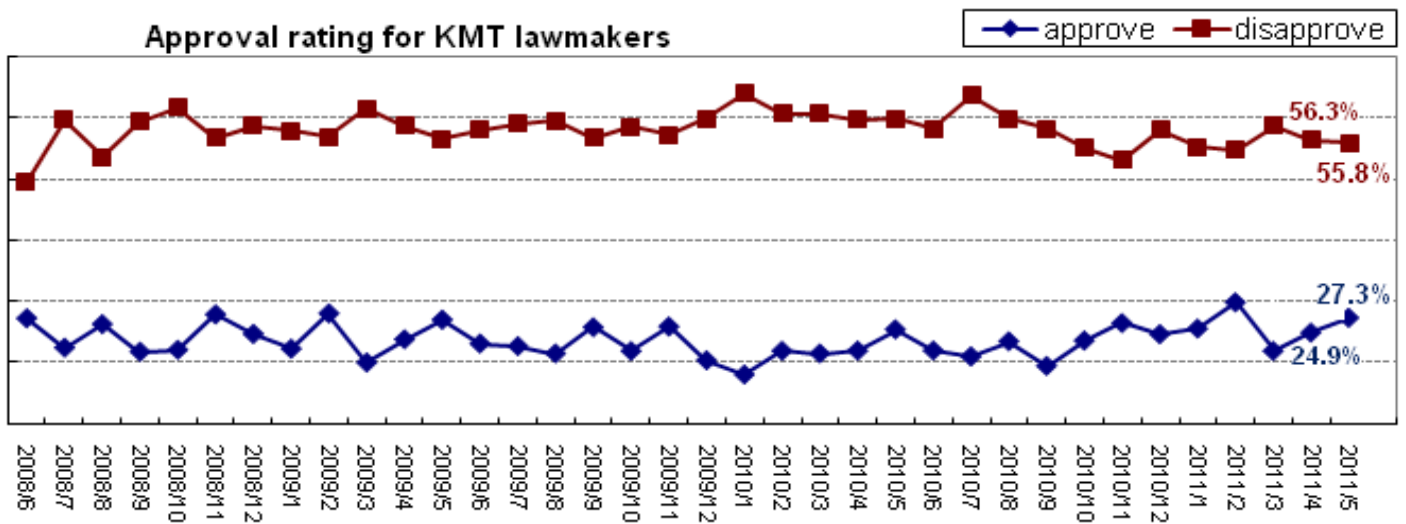
In addition, 33.8 percent of people were content with the cabinet members' performance, while 44.9 percent said otherwise. The cabinet members' approval rating remained the same and their disapproval rating slipped 0.6 percentage points in comparison with the previous quarter.

Although Premier Wu's job disapproval rating is higher than his approval rating in the past year, the gap is slowly narrowing. While the cabinet members are also facing the same situation as the premier in terms of their performance, their approval rating are at the highest level since President Ma took office, and the disapproval rating reached the lowest level with a narrowing margin.



E. Evaluation on KMT lawmakers' performance: 27.3 percent of people were satisfied with it while 55.8 percent were not.

The regular poll found that 55.8 percent of the respondents were not satisfied with the overall performance of the legislators of KMT, the dominating power in the Legislative Yuan. This percentage was much higher than their approval rating of 27.3 percent. Compared with the previous month, their approval rating rose 2.4 percentage points, and disapproval rating decreased slightly by 0.5 percentage points. In general, the variations are still within the margin of error.



This survey was conducted by GVSRC from 6.20 p.m. to 10.00 p.m. from May 15 to 17, 2011. It was conducted with random-digit-dial sampling and computer-assisted telephone interviewing methods. 1,002 Taiwanese people who are 20 or older completed the interview. One can say with 95% confidence level that the margin of error is $\pm 3.1\%$. Gender, living areas, ages, and educational level of the interviewees have undergone weighting procedure and test of the sample's representativeness in the survey results.