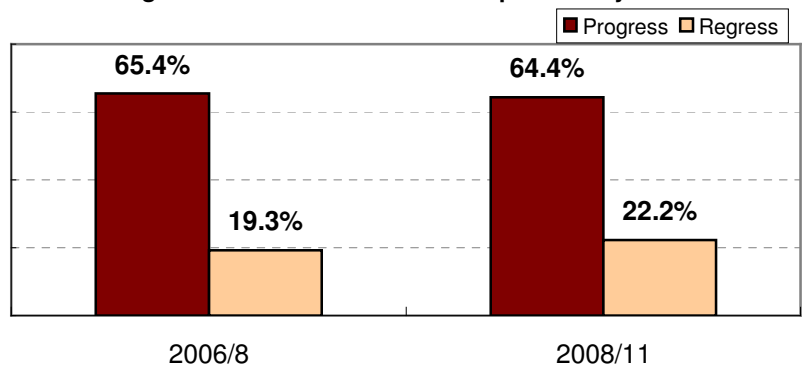


GVSRC Survey: Survey on Taiwanese people's attitude toward the detention of former President Chen Shui-bian and approval ratings for the new administration

A. 64.4% of Taiwanese people say it would reflect progress in Taiwan's democratic spirit and system if a former president is sentenced after he steps down for committing a crime. 57.3% say the detention of several former senior officials from the Chen Shui-bian administration and incumbent county magistrates on graft allegations is based on pure judicial concerns.

This GVSRC survey shows 64.4% of Taiwanese people think it would reflect progress in Taiwan's democratic spirit and system if a former president is sentenced and even jailed after he steps down for committing a crime when in office. 22.2% says this would reflect regress in Taiwan's democracy. Among pan-green supporters, 50.6% say it would reflect progress, while 33.0% say it would represent regress in Taiwan's democracy. The outcome matches the results from the GVSRC survey conducted in August 2006 when former President Chen Shui-bian was still in office. This shows Taiwanese people have formed fixed opinions about this issue.

If a former president is sentenced after he steps down for committing a crime, does this reflect progress or regress in Taiwan's democratic spirit and system?



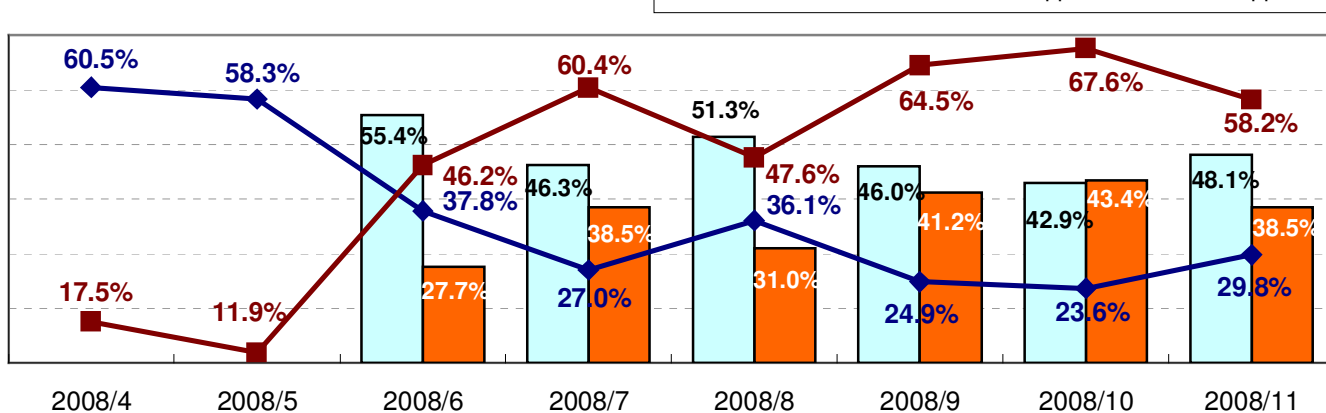
Taiwanese judges have order a number of former senior officials from the Chen administration and incumbent county magistrates jailed on graft allegations. This survey shows 57.3% of Taiwanese people think these are pure judicial cases, while 25.5% say they are political cases. Among different types of interviewees, there is a higher percentage of people who think the cases of the former president and officials are rather political than judicial only in the group of pan-green supporters and those with an elementary school or less education.

B. President Ma Ying-jeou's approval rating after six months in office: 29.8% of Taiwanese people say they approve of Ma, while 58.2% say they don't. 48.1% say they trust Ma, and 38.5% say they don't.

This GVSRC survey shows six months after Ma took office, 29.8% of Taiwanese people say they approve of him, and 58.2% say they don't. Compared with last month, Ma's approval rating rises 6.2%, and his disapproval rating falls 9.4%. Meanwhile, 48.1% say they trust Ma, and 38.5% say they don't. Compared with last month, there is an increase of 5.2 percentage

points in those who trust Ma, and a drop of 4.9 percentage points in those who don't trust him. This may reflect people's feelings about the outcome of the 2nd "Chiang-Chen Talks" in early November, the reduction of tension in cross-strait relations, and the detention of former President Chen Shui-bian on graft allegations.

The trend of approval for Ma and public trust in him

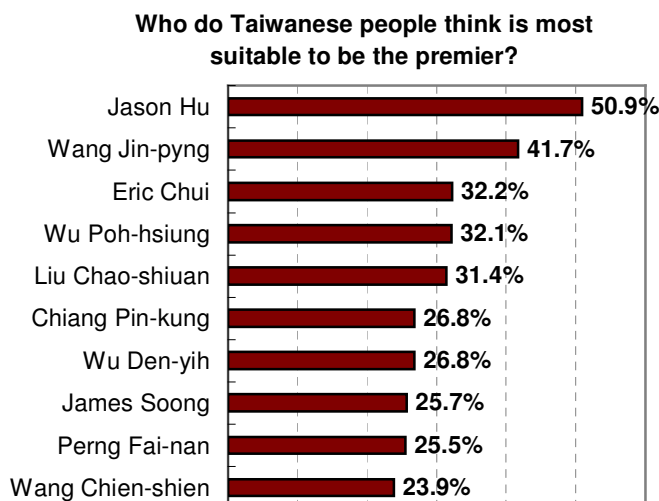


C. Premier Liu Chao-shiuan's approval rating: 25.4% of Taiwanese people approve of his performance, while 58.3% don't. 23.5% of Taiwanese people are satisfied with Cabinet ministers, while 55.9% say they don't.

This GVSRC survey shows 25.4% of Taiwanese people approve of Premier Liu Chao-shiuan's performance over the past six months. 58.3% say they disapprove of Liu's performance. Liu's approval rating drops 8.8% and his disapproval rating rises 12.4% in this survey, compared with the survey conducted 100 days after the new government came in power.

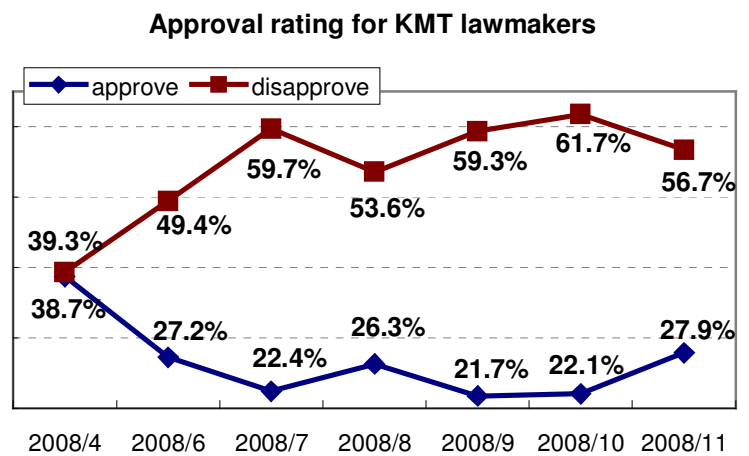
Meanwhile, 23.5% of Taiwanese people are satisfied with the performance of Cabinet ministers, 55.9% say they are dissatisfied. Cabinet ministers' approval rating drops 4.5% and their disapproval rating rises 8.4% in this survey, compared with the survey conducted 100 days after the new government came in power. Both the premier and Cabinet ministers see their approval ratings drop and disapproval ratings rise in this survey.

This survey also asks people about whom they think is most suitable to be the premier, providing them with a list of ten candidates in a random order. The results show that Taichung Mayor Jason Hu has 50.9% of public support, the highest among all candidates. Legislative Speaker Wang Jin-pyng follows Hu with 41.7% of public support. Next is Taoyuan Country Magistrate Eric Chui with 32.2% of public support. KMT Chairman Wu Poh-hsiung has 32.1% of public support, and incumbent Premier Liu Chao-shiuan has 31.4%.



D. Approval rating for the KMT lawmakers: 27.9% of Taiwanese people approve of KMT lawmakers' performance, while 56.7% don't.

This GVSRC survey shows 56.7% of Taiwanese people are dissatisfied with KMT lawmakers' performance. Only 27.9% are satisfied with KMT lawmakers' performance. Compared with last month, KMT lawmakers' approval rating rises 5.8%, and their disapproval rating drops 5.0% this month. This shows that although the KMT controls over 70% of all legislative seats, but KMT lawmakers have failed to reach public expectations over the past ten months since they took office. This will continue to hurt the party image of KMT.



E. Do Taiwanese people think the two sides across the Taiwan Strait are both countries established by the Chinese race after the 2nd "Chiang-Chen Talks"? 60.7% of Taiwanese people say so, while 21.4% they don't think so.

The 2nd "Chiang-Chen Talks" between Taiwan and China since President Ma Ying-jeou's inauguration took place in early November. The two sides signed agreements to collaborate on food safety issues, establish direct air and sea transport across the Taiwan Strait, and expand postal service. They also established institutionalized communication channels. As the two sides start a new chapter in bilateral relations, this GVSRC survey shows 60.7% think the two sides across the Taiwan Strait are both countries established by the Chinese race, while 21.4% say they don't think so. Among different types of interviewees, the group of pan-green supporters has the highest rate (40.6%) of rejection to the notion that the two sides across the Taiwan Strait are both countries established by the Chinese race, but 45.3% of people in this group say they agree with the notion. This shows that pan-green supporters are split on the issue.

This survey was conducted by GVSRC from 6.20 p.m. to 10.00 p.m. on Nov. 14-18, 2008. It is conducted with random-digit-dial sampling and computer-assisted telephone interviewing methods. 1000 people who are 20 or older completed the interview. One can say with 95% confidence that the theoretical margin of sampling error is $\pm 3.1\%$. Gender, living areas, ages, educational level and other features of the interviewees have undergone weighting procedure and test of the sample's representativeness in the survey results.